



St Mark's College
ADELAIDE

**Enrich Your University Experience
& Discover Your Potential**



*Live, learn and thrive
at St Mark's*

A RESIDENTIAL ACADEMIC COMMUNITY IN ADELAIDE FOR STUDENTS OF
THE UNIVERSITY OF ADELAIDE, UNIVERSITY OF SOUTH AUSTRALIA AND FLINDERS UNIVERSITY.



EVERYTHING WE DO
IS FOCUSED ON HELPING YOU

Achieve Excellence

Enrich your university experience and discover your potential at St Mark's College.

St Mark's is a world-class university residential college in Adelaide which provides students with a complete university experience in a safe, inclusive environment.

Since its foundation in 1925, St Mark's has supported successive generations of talented and motivated students to success in their studies and careers, and has promoted the values of integrity and respect for others, academic excellence, and community service.









Welcome from the Head of College

For nearly 100 years, St Mark's has offered students an outstanding all-round educational experience.



The College provides a safe, welcoming, values-based environment in which undergraduate and postgraduate students can excel in their studies and enjoy university life to the fullest.

St Mark's College is a vibrant and diverse community of students and staff. The welcoming and supportive environment helps our students to fulfil their potential in academic achievement whilst being engaged in a range of extra-curricular and social activities. We actively promote excellence in intellect, character, leadership, and service.

St Mark's is a thriving residential academic community where university students gain a greater understanding of themselves and the world around them. Students from all over Australia and the world call St Mark's home and take up the opportunities to lead, be part of a team, contribute actively to College and university life, and do well in their studies. These opportunities give our students a competitive advantage when preparing to enter the workforce.

St Mark's is committed to providing a safe and inclusive learning environment for all students based on the values of respect and dignity for all, academic excellence, and community service. We are an Anglican college which welcomes and supports students and staff of all faiths and none.

Welcoming undergraduate and postgraduate students from diverse backgrounds, St Mark's provides support during important life transitions – including from school to university, throughout university study, and from study to work or further study opportunities.

In becoming a member of St Mark's College, you join a community to which you belong for the rest of your life, part of a globally connected alumni network. Many Old Collegians, grateful for the opportunities they had at St Mark's, give generously to hand on and improve these opportunities for current and future students.

College is a time of self-discovery, where you develop greater independence and a broadening of perspective. St Mark's aims to make your years here an enjoyable, intellectually stimulating, and broadening period of personal growth.

Come and see what opportunities await you in this next exciting phase of your life!

Professor Don Markwell
HEAD OF COLLEGE



Academic Life

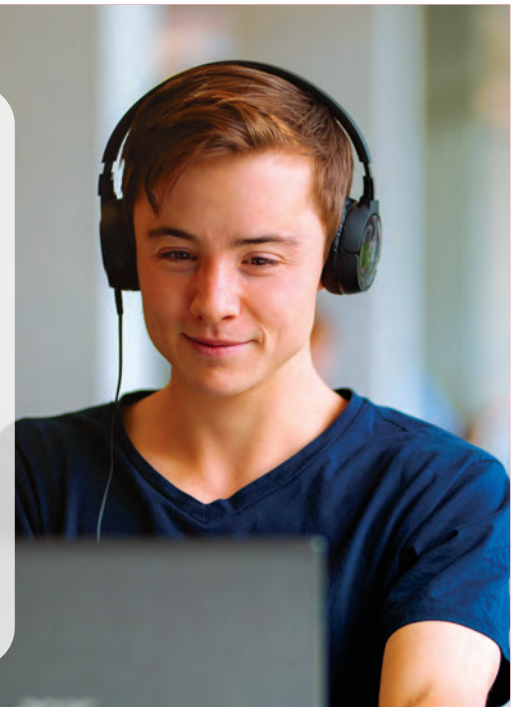
St Mark's is justifiably proud of the outstanding academic results of our students. Our academic support programs encourage all students to excel in their studies.

Through our tutorials and professional development workshops, St Mark's provides everything possible to set its students on the path to success.

Students are surrounded by people, programs and facilities which help them achieve their academic best and reach their full potential.

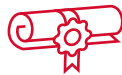
Living and learning at St Mark's undoubtedly helps build a solid foundation for success in university and beyond.

"Living amongst those who study similar courses to me has been immensely helpful. I've realised it's okay to ask for help, whether it be a personal problem or academic. I've learned so much about myself this year and feel St Mark's has shaped a part of who I am."



Academic Excellence

Students at St Mark's consistently achieve High Distinctions and Distinctions in around 50% of their subjects. Studying in a supportive environment, surrounded by academically minded peers and with access to academic tutors, can help you achieve your personal best at university.



World Class Universities

Adelaide is privileged to host three world-class universities: the University of Adelaide, the University of South Australia and Flinders University. Students at St Mark's can study their degree of choice at any of these three excellent institutions.



Academic Tutorials

Our Academic Tutorial program is tailored each year according to student needs. Students have the chance to achieve the best results possible with extra help on offer at weekly academic tutorials offered in a wide range of subjects. The program also includes study skills and time management workshops, along with one-on-one support and a small group learning environment.



Mentoring

The College has a strong focus on supporting students to build professional networks and receive mentoring from academic, industry, professional and community leaders. These include many Old Collegians who have chosen to give back in this way. Students also organise faculty dinners, workshops, and seminars where leading experts in industry, business, academia and the community are invited to speak to and connect with our students.



Learning and Wellbeing Reviews

St Mark's takes the wellbeing of its students very seriously. A motivated, dedicated support team is committed to helping students get the most from their studies and extra-curricular activities while at College.

Learning and Wellbeing Reviews give every student the chance to meet with the Dean, Director of Learning and Director of Wellbeing each semester to discuss their academic progress, career goals and overall health and wellbeing.

This is in addition to ongoing academic and pastoral support on a day-to-day basis. Students are always encouraged to discuss concerns with a member of staff or the wellbeing team at any time.



Technology and Facilities

All students have access to wireless internet enabling them to connect and study wherever they like, including our Learning Commons and Academic Centre. Printing and scanning equipment is available in the state-of-the-art Academic Centre and tutorial rooms are equipped with smart screens for shared learning and presentations.

Our Academic Centre holds an extensive library collection, including many core textbooks, a wide range of fiction and non-fiction, a rare books collection, and other resources.



Wellbeing

The safety, health and wellbeing of every St Mark's student is of paramount importance. The Head of College, Dean and Director of Wellbeing live on site and provide support to students.

The challenges of moving away from home and transitioning to university can be really stressful and this is where we can make a difference.

Our students are young adults who come from different locations, backgrounds and experiences. Staff, student leaders and professional advisors provide education and support to help them nurture and maintain a healthy mind, body and spirit which leads to success in their studies and their personal growth.

Wellbeing Team

Led by the Director of Wellbeing, who is a registered psychologist, the wellbeing team and other senior staff and student leaders undertake extensive training for their roles and are available at all times to support students.

Training and Education

An extensive training program conducted by professional external experts educates students on the importance of mental and physical health, responsible approaches to alcohol, respectful relationships, consent, values-based leadership, and what it means to be an ethical bystander.

Learning and Wellbeing Reviews

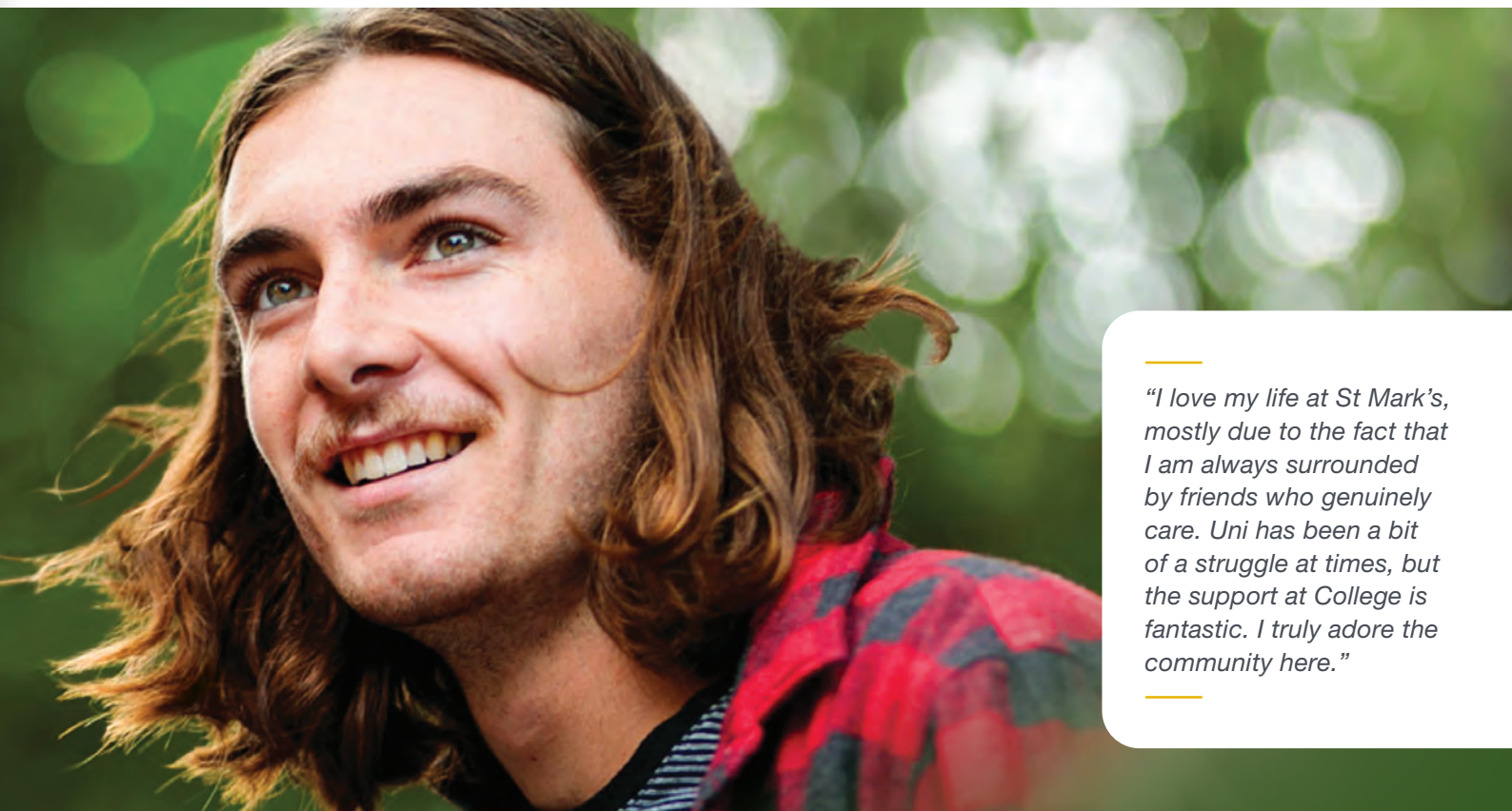
Learning and Wellbeing Reviews give every student the chance to meet with the Dean, Director of Learning and Director of Wellbeing each semester to discuss their academic progress, career goals and overall health and wellbeing.

Counselling

The Director of Wellbeing, who is an experienced social worker, lives on site, offers one-to-one wellbeing support to students, and promotes positive wellbeing for all. The College also engages an independent psychologist, who visits at least monthly to provide psychological services for students with a Mental Health Care Plan. Additional counselling services are available at all three Adelaide universities. This extra level of support provides parents and students with peace of mind.

Spiritual

Our live-in Anglican Chaplain conducts regular morning prayer in the College's own Chapel and students are encouraged to engage with their own beliefs through local churches or community groups.



—
“I love my life at St Mark’s, mostly due to the fact that I am always surrounded by friends who genuinely care. Uni has been a bit of a struggle at times, but the support at College is fantastic. I truly adore the community here.”
—



I have taken on a leadership role to continue my personal and leadership development and give back to this community that has given me so much.





Personal & Professional Development

St Mark's students get a head start in their career and personal lives with access to leadership roles, training programs, guest speakers, mentoring and advice from industry leaders and a global alumni network.

Personal Development

Students can take advantage of many personal development opportunities at St Mark's which have a positive impact on their College experience and beyond.

Extensive education and training opportunities, provided throughout the year, help students navigate what it means to be a respectful and positive member of the College and wider community by developing their communication, team work, conflict resolution, problem solving and interpersonal skills.

Student Leadership

College life provides many opportunities for students to develop their leadership skills. Accountable student leaders, working in partnership with College staff, play a crucial role in establishing a healthy, respectful, inclusive and welcoming culture.

There are a range of student leadership positions at the College including Residential Advisor, Academic Tutor, College Club or Charitable Foundation Committee Member, Sports Captain, Play Director, Gym Curator, Library Assistant, and others. Taking on leadership responsibility is a great way for young people to develop resilience and an understanding of themselves, their strengths and areas for development.

Professional Development

Training in workplace expectations, resume writing and interview techniques help students prepare for their post-university pathway.

In addition, creating professional networks and receiving mentoring from our global alumni and other working professionals keeps students connected to future career opportunities.

Guest Speaker Series

A thought-provoking program of guest speakers helps expand students' world views and encourages new ways of thinking.

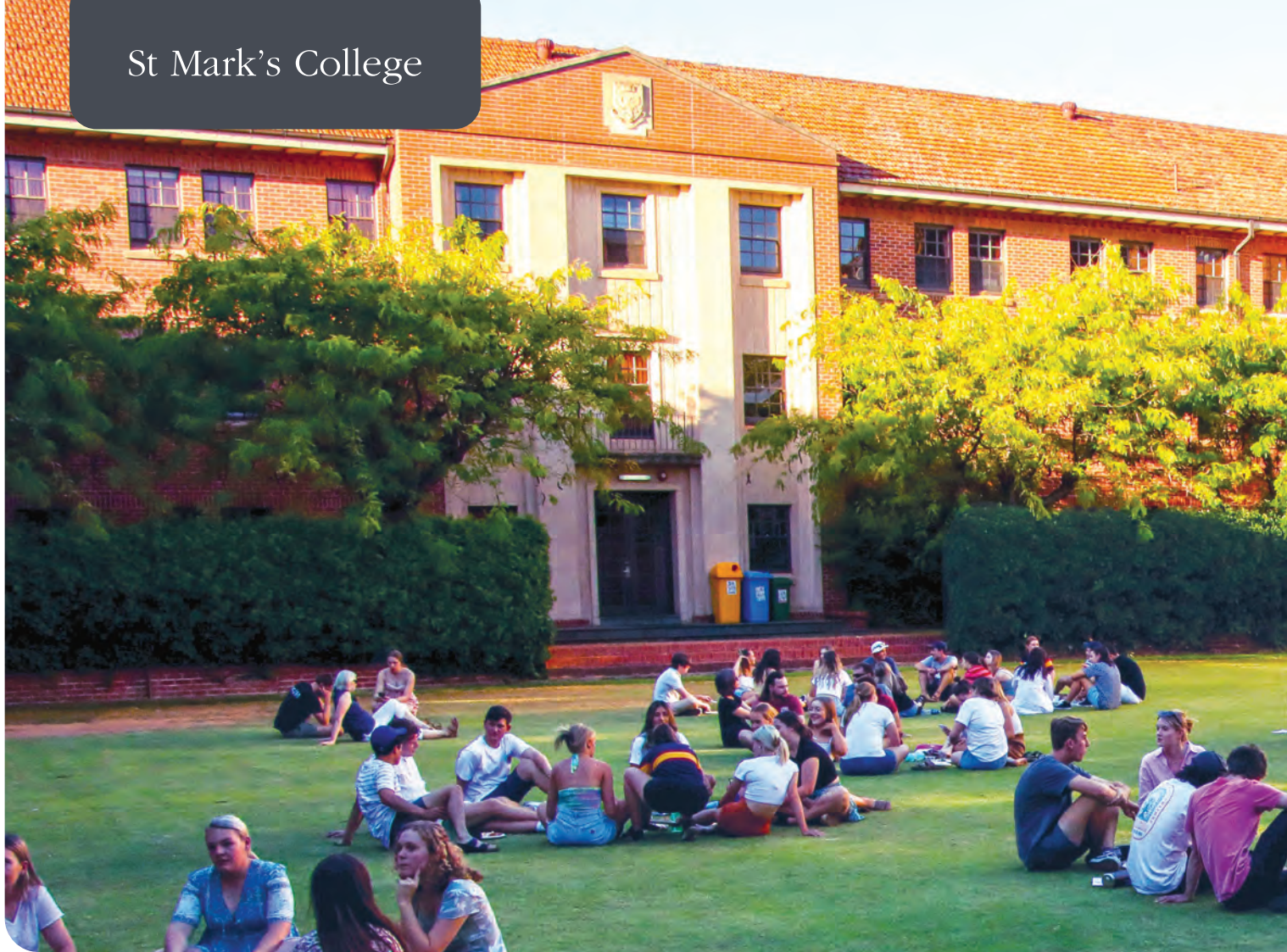
Guest speakers present on a range of general interest topics that address relevant events, current affairs and experiences in the broader community. They also include academic, faculty-specific, career pathway, personal development and health and wellbeing topics, among others.

Sharing their insights and experiences are industry leaders and Old Collegians who are experts in their field.









Social & Community Engagement

Students at St Mark's can make the most of their time at College by getting involved in the vibrant social and events program, volunteering work and fundraising activities.



“Living in this community has given me greater confidence in creating new relationships and tackling new situations due to all the social and cultural opportunities available.”

College Club

All students within the St Mark's community are members of our College Club.

The College Club Committee, elected by students each year, organises an impressive lineup of events in partnership with other student leaders and the College staff.

Events and experiences are designed to appeal to a broad mix of interests. All students are encouraged to contribute their ideas and challenge themselves with new experiences as part of College life.

Community Service

St Mark's is a caring community, with a strong commitment to community service, both within the College and in the wider community. Our student-led Charitable Foundation puts significant time and effort into organising initiatives to raise funds and awareness for vulnerable or disadvantaged community groups.

There are opportunities for volunteering throughout the year and an opportunity for students to support charitable organisations of particular meaning to them.

Communal Dining

Communal dining is at the heart of the St Mark's experience. Gathering together for meals in the Dining Hall provides an opportunity for students to interact on a daily basis as there is always someone to talk to.

Students enjoy three cooked meals a day and can also prepare a packed lunch or get an early or late meal if they have university or other commitments.

Formal Hall is a longstanding and enjoyable tradition at St Mark's where students dine communally a number of nights a week with table service and the wearing of academic gowns.

Informal Socialising

The College offers opportunities to socialise and meet new people which is ideal for students who may be living away from home for the first time. Formal social events include the annual Ball while informal gatherings may include movie nights or a casual game of pool in the Junior Common Room.





Sport & Creative Arts

A well-balanced life includes more than just study. St Mark's offers a diverse range of recreational activities that cater to students who favour sporting, creative, or any of a host of other pursuits.

Inter-collegiate competition

Teamwork and sport are an important part of College life. The inter-collegiate competition sees the Adelaide colleges compete across eleven sports for the Douglas-Irving Cup. The competition is friendly and enjoyable, enabling the participation of students with varying levels of skill and athletic ability.

St Mark's fields a team in every inter-college sport including swimming, tennis, debating, netball, volleyball, table tennis, basketball, soccer, hockey, football and athletics.

Sporting Leadership

Students are also able to take on leadership responsibility to help coach or captain a team. These experiences ensure students develop their own leadership and time management skills.

On-Site Gymnasium

Our gym sets the standard for on-site gym facilities at a university residential college. Access to the large, modern, fully-equipped gym is included in student fees.

Environmental Conservation

Our students are passionate about improving the environment. The student-run Environmental Group organises a range of activities, including managing an on-site vegetable garden, holding regular beach clean-ups, planting trees in the Adelaide Hills and hosting educational events.

Visual Art

Our annual Art Show enables students to showcase their works of art including drawing, painting, photography and sculpture.

Music

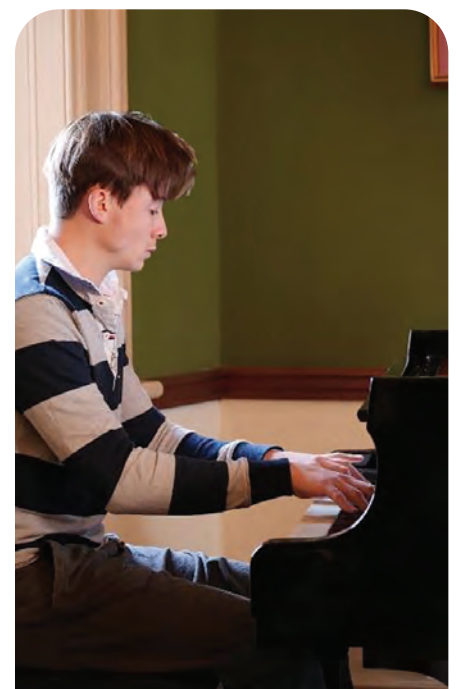
Music is an important and popular part of College life. Arts Evenings are held throughout the year and are open to all students wishing to present a music, dance or drama performance. Battle of the Bands, the College Choir and other music ensembles add an enriching dimension to College life.

Music rehearsal spaces are available at College containing musical equipment, such as a baby grand piano and sound equipment.

Drama

Budding thespians at St Mark's can use their talents and have fun helping stage a number of dramatic and performing arts events at St Mark's.

The College Play offers opportunities to write, direct, act, work backstage or assist with make up, costumes and technical production. Individual students also present dramatic pieces, monologues and comedy items as part of the regular Arts Evenings.







St Mark's College





"Living at St Mark's helps me to interact easily with a range of different people who are studying different degrees. I really enjoy coming home from uni to relax and unwind in my room by myself, or with friends. Having the option to do both is great."





Your Room, Dining & Car Parking

St Mark's is a home away from home for students with comfortable, furnished rooms, a communal dining hall serving daily hot meals and a secure, on-site car park.

Your Room

Every student has a comfortable, safe and secure room of their own with wireless internet and a weekly room cleaning service.

Students are provided with a single bedroom with shared bathroom and kitchens. Apartment style accommodation provides students with their own kitchen, lounge, laundry and bathroom facilities.

All bedrooms are furnished with a king single bed with mattress (some rooms with queen or double beds), bookshelf, study desk with desk chair and a wardrobe.

Students are encouraged to add personal touches to their rooms and many bring a bar fridge and small TV.

Safety and security is assured with a smart card system as the locking device for all individual student rooms and buildings.

Dining

Meals in the Dining Hall bring together the whole St Mark's community to interact with each other.

The communal dining room offers students three cooked meals a day, including on weekends and during vacation periods. A packed lunch and early and late meals are also available for students unable to dine in during meal times.

The quality and choice of food served is excellent and dietary requirements are catered for. Shared kitchen facilities across the College provide basic equipment for students to prepare food.

Car Parking

St Mark's provides more than 150 secure, on-site car parks for the convenience of students. The purpose-built car park is multi-decked over nine levels and access is provided via secure access key. Places are allocated on admission to the College at an additional cost.





College Community



Each and every student who lives and studies at St Mark's becomes part of a diverse, caring and values-based community.

St Mark's prides itself on the strength of its community, providing a secure and positive environment for students to achieve their goals through structured academic programs, wellbeing support, professional development, and a broad extra-curricular offering to ensure that they have opportunities to flourish and succeed at university and in their lives and careers beyond.

The College is a thriving community of around 230 young people from around Australia and the globe, where, in addition to being an environment centred around achieving academic excellence, opportunities are provided for students to take up the challenges of leadership, be part of a team, contribute to College life and thrive as young adults



Community Values

The following values guide our behaviour and choices in all things: respect, excellence, inclusion, integrity, service, and community.


The College expects all its members to live by these core values, including through upholding respect and dignity for all, pursuing academic excellence, and serving the wider community.

We have a mutual responsibility to live according to these values and maintain our respectful living and learning environment.

We place importance on being a welcoming and inclusive community that:

- promotes intellectual enquiry and rigour, a love of learning and a culture of continuous improvement
- supports the wellbeing of each student to enjoy a healthy and happy College experience
- fosters respectful relationships and lifelong friendships
- expects personal and professional conduct characterised by fairness and integrity
- encourages a willingness to serve others and to give back to the community in a spirit of thankfulness
- cares about the environment and embraces the principles of ecological sustainability
- values the vision of our founders, our Anglican foundation and the best traditions of the College
- takes an active, progressive and outward-looking approach to life.

As a member of our values-based community, you will also be encouraged to understand more about your own personal values and how you can live these every day. These experiences will enhance your personal growth and help set you up for a successful career.



St Mark's students
come from all over
Australia and the world.

Undergraduate Students

A residential college is the best environment for a student to complete their undergraduate education. St Mark's provides a safe and inclusive environment which helps students with the transition from high school to university, through their university studies, and into future career or postgraduate pathways. We are here for you at every step of your degree, providing enriching opportunities you cannot get elsewhere.

Postgraduate Students

Postgraduate study doesn't have to be a lonely experience. As an academic community St Mark's is a place where postgraduate students can thrive. Our senior staff hold postgraduate qualifications and are experienced at supporting postgraduate students to complete their degrees. Living in a college supports research and coursework students to excel academically while maintaining a healthy lifestyle, gaining access to an extensive professional and alumni network, and benefitting from living in an intellectual community.

Aboriginal Students

We are proud to be the chosen residential college for many Aboriginal students who are studying in Adelaide. St Mark's aims to provide a culturally safe environment that enriches Aboriginal and non-Indigenous students alike. With the support of our Indigenous Advisory Group, local community leaders and our current Aboriginal students, we are committed to making world-class educational opportunities attainable for all Aboriginal students. We have scholarships available to support Indigenous students, and eligible students also benefit from support through the ABSTUDY Residential Costs option, which typically covers the full cost of College fees, making College highly accessible to Aboriginal students.

Metropolitan Students

Living at college makes sense for all students, regardless of where they are from. Many students from Adelaide and other capital cities have benefited from a St Mark's experience. College is not just accommodation – it is a residential academic community that will support you to succeed in every aspect of your life. Give yourself an advantage over your peers and embrace the opportunities St Mark's provides for academic support, a well-rounded lifestyle, leadership training and professional development.

Rural Students

St Mark's has a proud history of supporting students from rural and regional areas to get the best possible university education. We understand the challenges moving to the city can bring and set you up for success by providing a supportive community that welcomes you to life in Adelaide. Financial support is available to rural students, making a world class education accessible to all.

International Students

Each year we welcome international students drawn from around the world. In recent years, students have come from China, Malaysia, the USA, Singapore, New Zealand, the UK, South Korea, Fiji and India, among other countries. St Mark's provides a safe and welcoming environment for students from around the world, helping them achieve their potential and develop strong networks and career opportunities in Australia.

Study Abroad Students

St Mark's warmly welcomes Study Abroad students from around the globe. Our college provides an authentic Australian experience, where you will make lifelong friends from around the country and the world. We support students to make the most of their program, helping them settle into their courses, meet new people, and make the most of their time in Australia.



Fees & Financial Assistance

Our all-inclusive fees make St Mark's excellent value for money.



Fees

St Mark's College fees cover accommodation, high-quality daily meals, weekly room cleaning, utilities, internet access, pastoral support, world-class facilities, and access to the highly-regarded academic tutorial program.

The College usually sets its annual fees in November for the following calendar year. Fees cover the whole academic year of 40 weeks for all students comprising two 20-week semesters.

Students are valued members of a safe, supportive community and have access to countless academic and social opportunities.

Considering the whole experience, the College fees offer outstanding value for money in such great proximity to the city and university campuses.



Scholarships, grants, prizes and bursaries

St Mark's College seeks to encourage the pursuit of academic excellence, the development of good character and a commitment to service in all its students, and to ensure that, as far as possible, financial need is not a barrier to gaining the benefits of an all-round collegiate education at St Mark's.

Through the generosity of our alumni and friends, the College is able to provide financial assistance including scholarships, prizes and bursaries to a total value of over \$500,000 for new and existing students each year. More than 50 per cent of students receive some form of financial assistance to help them attend or continue to live and learn at the College.

Scholarships are typically awarded on the basis of a combination of academic merit, financial need, and community service – with the weighting of these and other criteria (such as subjects studied, or where the student is from) dependent on the criteria laid down by the scholarship's donors.

Students also benefit from the opportunity to take on leadership roles, many of which have associated bursaries, providing the dual benefits of professional development and financial support, as well as service to the College community. Alongside this, the College provides some opportunities for part-time and casual employment, such as with our maintenance team.

Scholarship recipients are encouraged to think about the impact they can make in the lives of others, both now and in the future. Many of our scholarships and prizes have been made possible through the generosity of alumni of the College who have been deeply grateful for the opportunities that St Mark's has given them, conscious that these opportunities have been made possible through the earlier generosity of others, and committed to handing on those opportunities to future generations of students. We hope that all members of the College, being grateful, will in time do their best to support those who come after them.

Any student who would like to attend St Mark's but thinks they cannot afford the fees is invited to discuss their options with the College.



Residency contract

All students are contracted for the 40-week academic year (February to November).

Semester-only (20 weeks) contracts are available on request to students who are on an approved study abroad program or are commencing mid-year.



Application process

St Mark's welcomes applications from students who are currently enrolled or intend to enrol in full-time Bachelor-level or higher degree study at the University of Adelaide, University of South Australia or Flinders University.

Applications for new students are accepted year-round for commencement in February of the following year. There is also a mid-year intake each year and applicants are encouraged to discuss this with the Registrar upon application if they intend to commence mid-year.

Prospective students can apply online through the St Mark's College application portal via our website **stmarkscollege.com.au/application**

Successful applicants are invited to an interview where we aim to learn more about them and their interest in living in our residential community. For students unable to attend an interview in person, phone and Zoom interviews are available. Tours are available at all times and we welcome the opportunity to show you more about College life and introduce you to our students.

You can also take a virtual tour at: www.stmarkscollege.com.au/virtual-tours/





Central Markets

UniSA – City East

SA Art Gallery

State Library of SA

Government House

SA Museum

Adelaide Festival Centre

University of Adelaide

Adelaide Railway Station - Direct Train to Flinders University

Memorial Drive

St Peter's Cathedral

Women's & Children's Hospital



St Mark's College
ADELAIDE

Key Locations in Adelaide

Convention Centre

UniSA – City West

SAHMRI

Adelaide Health & Medical Sciences

Royal Adelaide Hospital

Memorial Drive Tennis

Adelaide Oval

St Mark's College acknowledges the Traditional Owners of the land on which we are situated, the Kurna people, and pay our respects to Elders past and present.



St Mark's College
ADELAIDE

f | @ | in | t

+61 8 8334 5600 | STMARKS@STMARKSCOLLEGE.COM.AU

46 PENNINGTON TERRACE, NORTH ADELAIDE 5006, SOUTH AUSTRALIA

© COPYRIGHT 2023 ST MARK'S COLLEGE, ALL RIGHTS RESERVED